



(2020-2021)

		Below30 %	30 To 54%	55 To 69%	70 To 84%	85 To 100%
1	How much of the syllabus was covered in the class?					
	NO.OF RESPONSE	0	1	4	63	32
2	How well did the teachers prepare for the classes?	Won't teach at all	Indifferently	Poorly	Satisfactorily	Thoroughly
	NO.OF RESPONSE	0	1	2	24	72
3	How well were the teachers able to communicate?	Very poor communication	Generally ineffective	Just satisfactorily	Sometimes effective	Always effective
	NO.OF RESPONSE	0	0	15	41	44
4	The teacher's approach to teaching can best be described as	Poor	Fair	Good	Very good	Excellent
	NO.OF RESPONSE	0	0	1	12	86
5	Fairness of the internal evaluation process by the teachers	Unfair	Usually unfair	Sometimes unfair	Usually fair	Always fair
	NO.OF RESPONSE	0	1	3	52	43
6	Was your performance in assignments discussed with you?	Never	Rarely	Occasionally	Usually	Every time
	NO.OF RESPONSE	0	1	5	34	60
7	The institute takes active interest in promoting internship, student exchange, and field visit opportunities for students.	Never	Rarely	Sometimes	Often	Regularly
	NO.OF RESPONSE	1	3	21	30	45
8	The teaching and mentoring process in your institution facilitates you in cognitive, social and emotional growth.	Not at all	Marginally	Moderately	Very well	Significantly
	NO.OF RESPONSE	0	1	17	39	44
9	The institution provides multiple opportunities to learn and grow.	Strongly disagree	Disagree	Neutral	Agree	Strongly agree
	NO.OF RESPONSE	0	0	3	61	37



10	Teachers inform you about your expected competencies, course outcomes and programme outcomes.	Never	Rarely	Occasionally	Usually	Every time
	NO.OF RESPONSE	0	0	33	26	41
11	Your mentor does a necessary follow-up with an assigned task to you.	I don't have a mentor	Rarely	Occasionally	Usually	Every time
	NO.OF RESPONSE	0	3	32	41	23
12	The teachers illustrate the concepts through examples and applications.	Never	Rarely	Occasionally	Usually	Every time
	NO.OF RESPONSE	0	0	15	43	42
13	The teachers identify your strengths and encourage you with providing right level of challenges.	Unable to	Slightly	Partially	Reasonably	Fully
	NO.OF RESPONSE	1	0	37	41	22
14	Teachers are able to identify your weaknesses and help you to overcome them.	Never	Rarely	Occasionally	Usually	Every time
	NO.OF RESPONSE	1	0	17	54	28
15	The institution makes effort to engage students in the monitoring, review and continuous quality improvement of the teaching learning process.	Strongly disagree	Disagree	Neutral	Agree	Strongly agree
	NO.OF RESPONSE	0	0	13	23	64
16	The institute/ teachers use student centric methods, such as experiential learning, participative learning and problem solving methodologies for enhancing learning experiences	Not at all	Very little	Some what	Moderate	To a great extent
	NO.OF RESPONSE	0	0	1	30	69
17	Teachers encourage you to participate in extracurricular activities.	Strongly disagree	Disagree	Neutral	Agree	Strongly agree
	NO.OF RESPONSE	0	0	3	18	79
18	Efforts are made by the institute/ teachers to inculcate soft skills, life skills and employability skills to make you ready for the world of work.	Not at all	Very little	Some what	Moderate	To a great extent
	NO.OF RESPONSE	0	0	0	70	30




A. Sreenivas
 Principal
NARAYANA COLLEGE OF NURSING
 Chinthareddypalem,
 NELLORE - 524 003.

19	What percentage of teachers use ICT tools such as LCD projector, Multimedia, etc. while teaching.	Below 29%	30-49%	50-69%	70-89%	Above 90%
----	---	-----------	--------	--------	--------	-----------

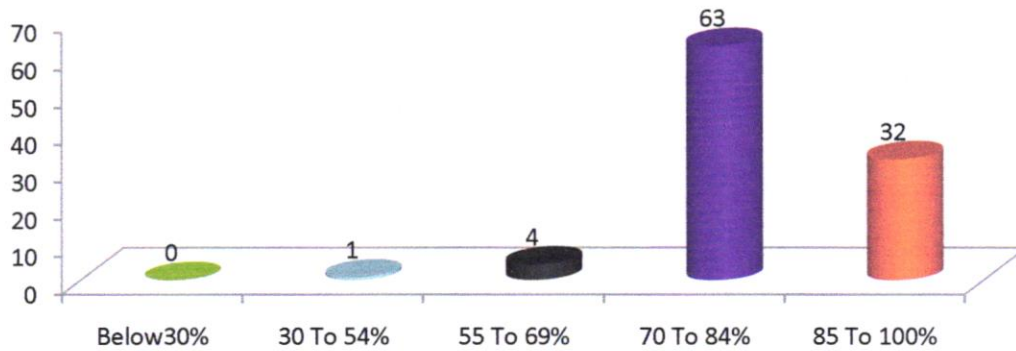
	NO.OF RESPONSE	0	0	25	19	56
20	The overall quality of teaching-learning process in your institute is very good.	Strongly disagree	Disagree	Neutral	Agree	Strongly agree
	NO.OF RESPONSE	0	0	17	13	39



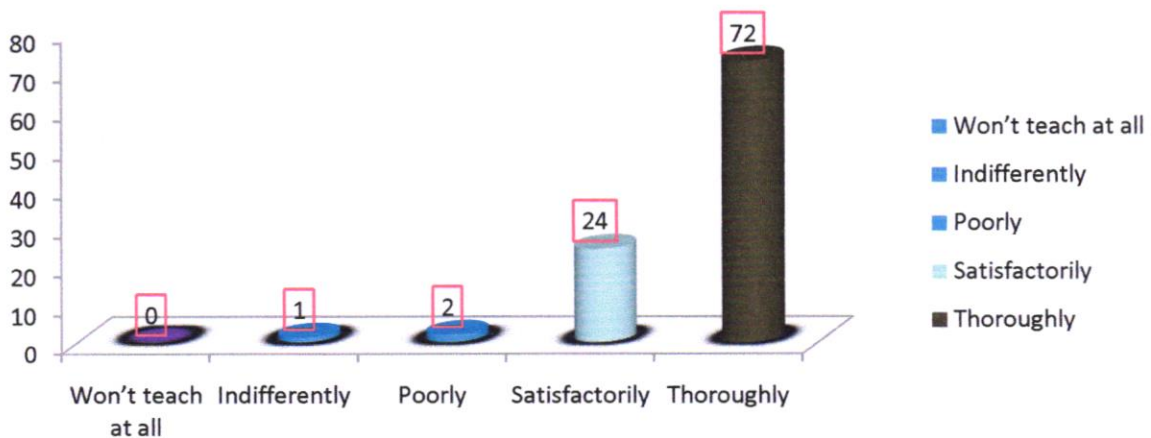

 Principal
NARAYANA COLLEGE OF NURSING
 Chinthareddypalem,
 NELLORE - 524 003.



1. How much of the syllabus was covered in the class?



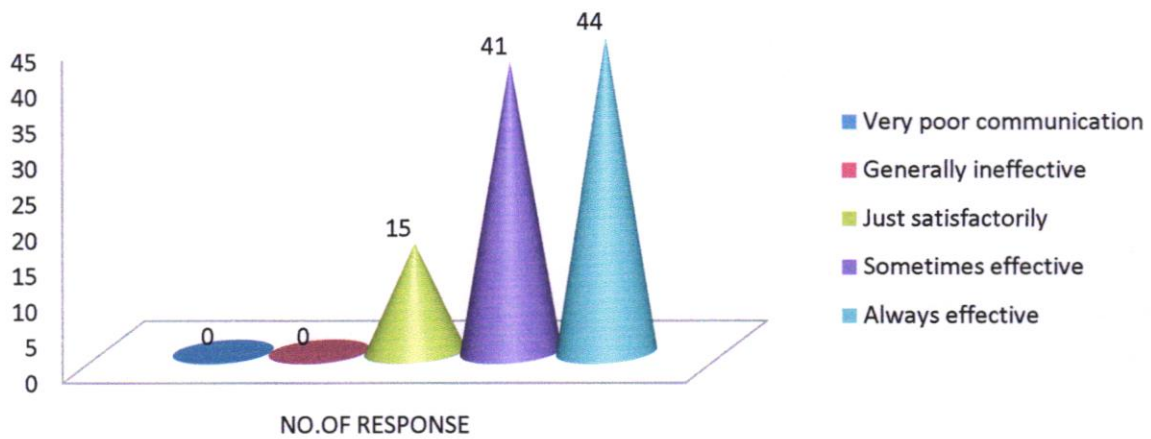
2. How well did the teachers prepare for the classes?



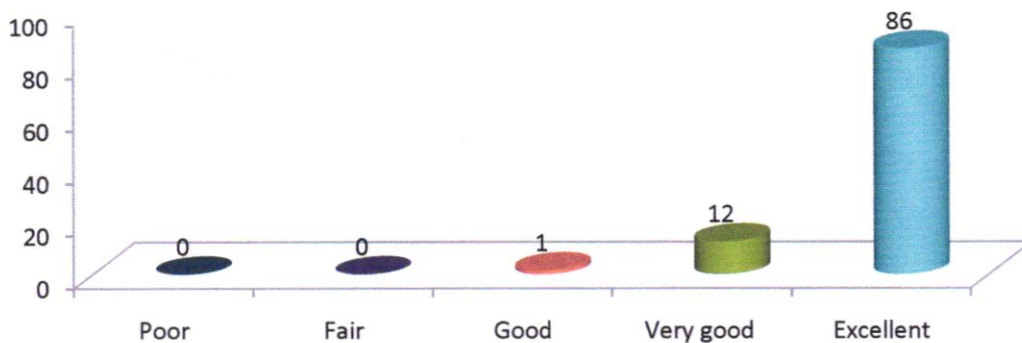
A. S. Nellore
Principal
NARAYANA COLLEGE OF NURSING
Chinthareddypalem,
NELLORE - 524 003.



3. How well were the teachers able to communicate?



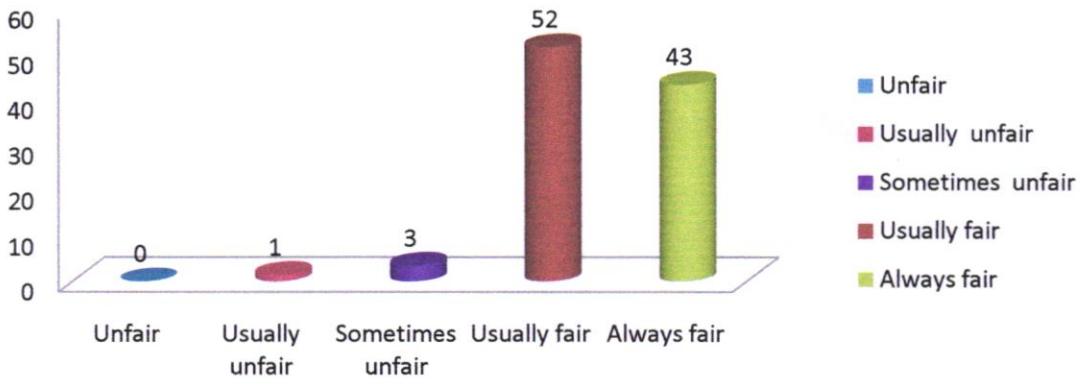
4 The teacher's approach to teaching can best be described as



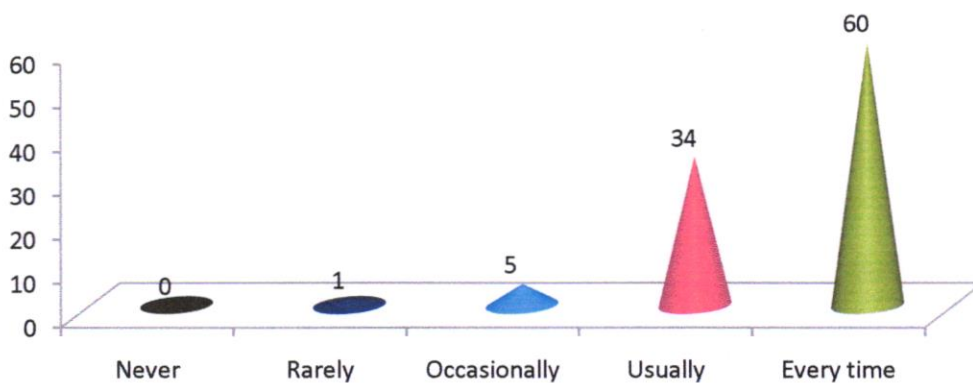
A. B. Devi
Principal
NARAYANA COLLEGE OF NURSING
Chinthareddypalem,
NELLORE - 524 003.



5. Fairness of the internal evaluation process by the teachers



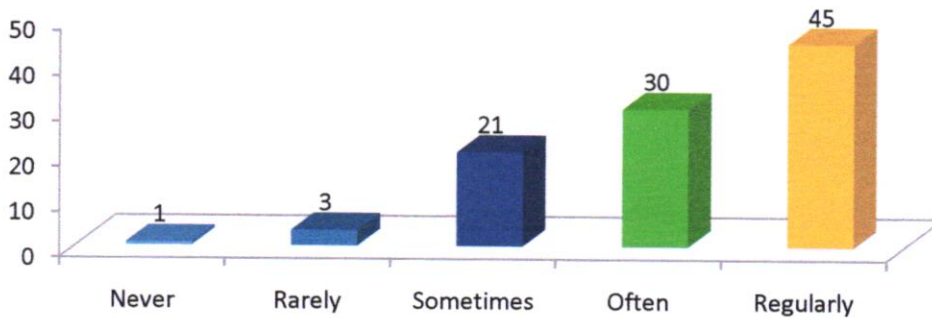
6 Was your performance in assignments discussed with you?



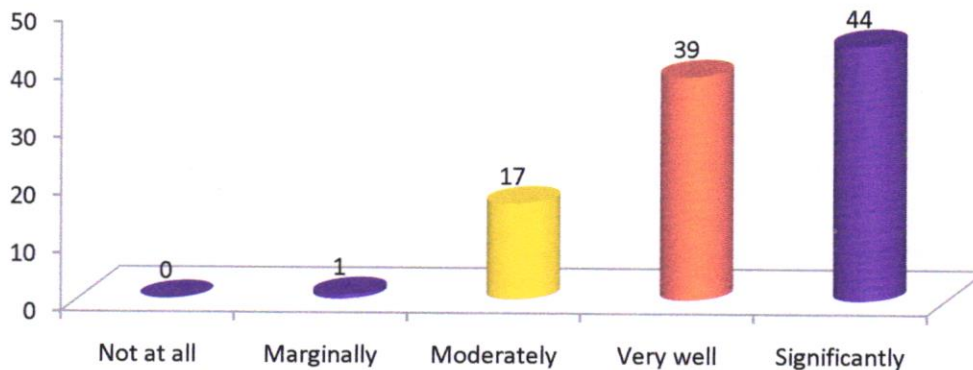
A. S. Reddy
Principal
NARAYANA COLLEGE OF NURSING
Chinthareddypalem,
NELLORE - 524 003.



7. The institute takes active interest in promoting internship, student exchange, and field visit opportunities for students.



8. The teaching and mentoring process in your institution facilitates you in cognitive, social and emotional growth.



A. S. Rao
Principal
NARAYANA COLLEGE OF NURSING
Chinthareddypalem,
NELLORE - 524 003.



NARAYANA
COLLEGE OF NURSING

Chinthareddypalem, Nellore - 524003. A.P.

Ph No: 0861-2317969 | Fax: 0861-2311968.

Recognized by Indian Nursing Council and A.P. Nurses & Midwives Council

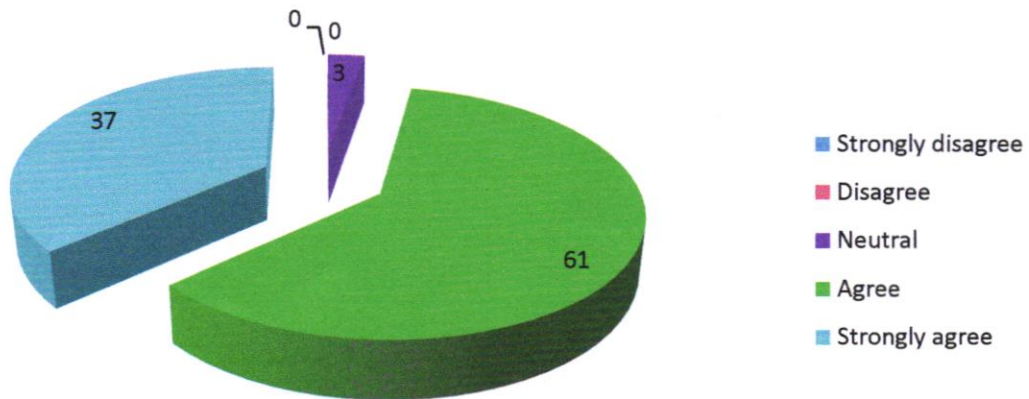
Affiliated to NTR University of Health Sciences, A.P. Vijayawada.

Accredited by "International Accreditation Organization (IAO)"

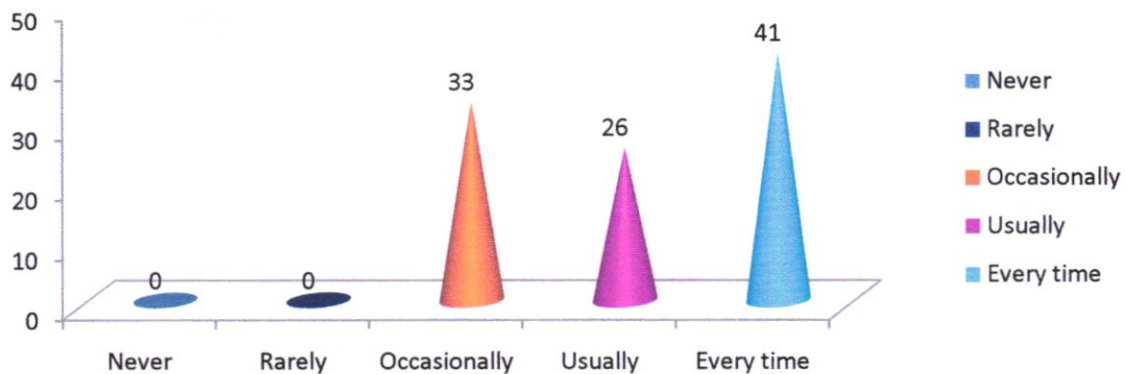
website: www.narayanannursingcollege.com || e-mail: narayana_nursing@yahoo.co.in



9. The institution provides multiple opportunities to learn and grow.



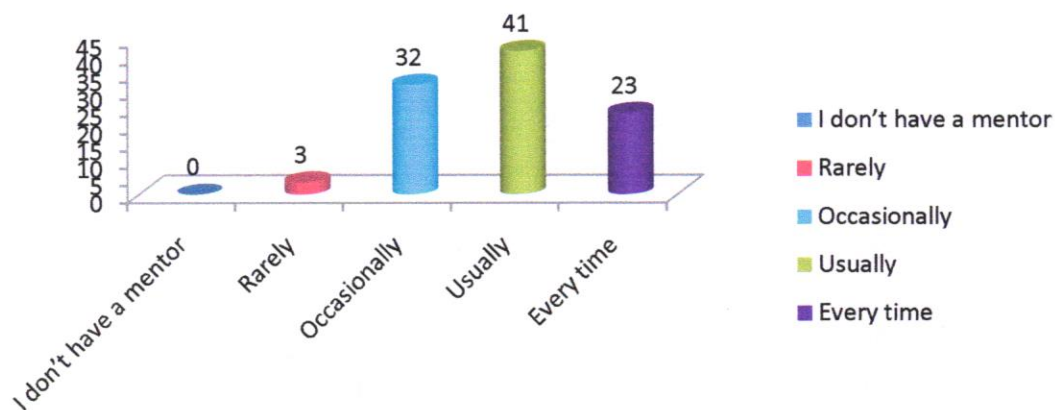
10. Teachers inform you about your expected competencies, course outcomes and programme outcomes.



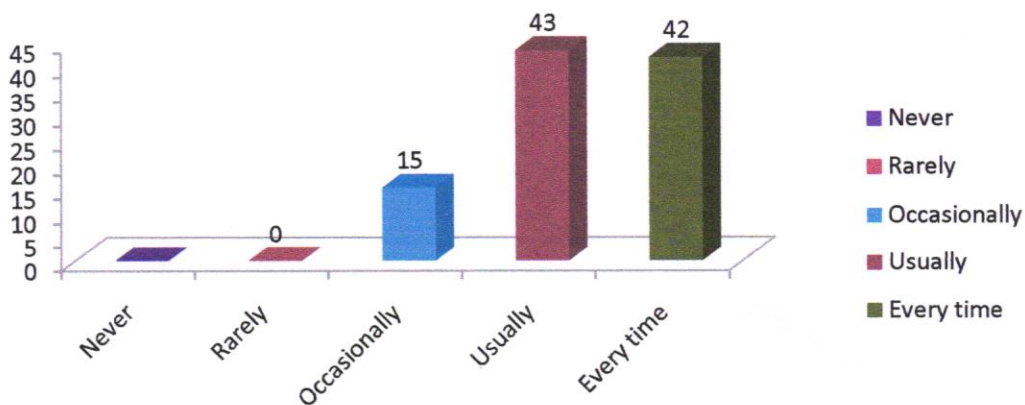
A. S. Sree
Principal
NARAYANA COLLEGE OF NURSING
Chinthareddypalem,
NELLORE - 524 003.



11. Your mentor does a necessary follow-up with an assigned task to you



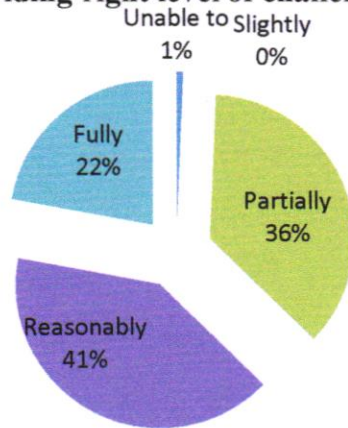
12. The teachers illustrate the concepts through examples and applications.



A. S. Rao
Principal
NARAYANA COLLEGE OF NURSING
Chinthareddypalem,
NELLORE - 524 003.

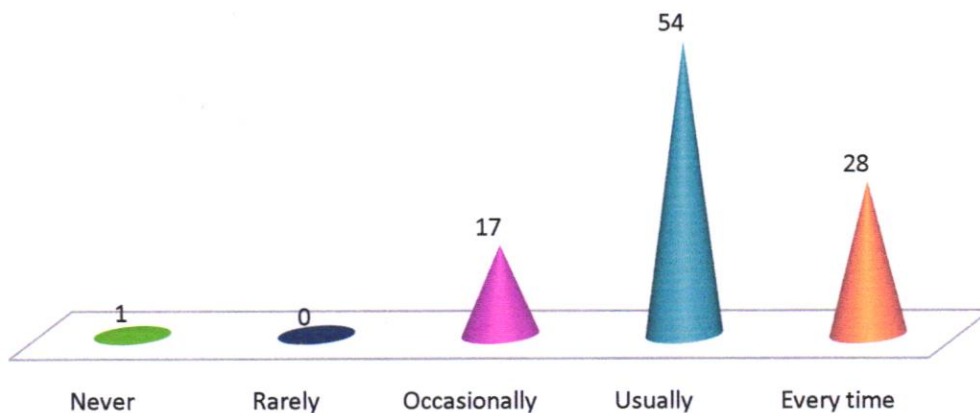


13. The teachers identify your strengths and encourage you with providing right level of challenges.



14. Teachers are able to identify your weaknesses and help you to overcome them.

■ Never ■ Rarely ■ Occasionally ■ Usually ■ Every time

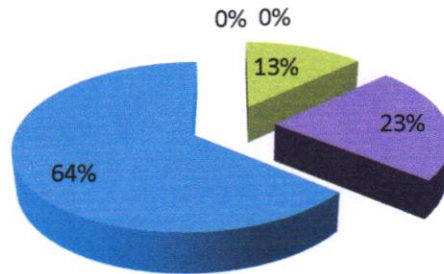


[Signature]
Principal
NARAYANA COLLEGE OF NURSING
Chinthareddypalem,
NELLORE - 524 003.

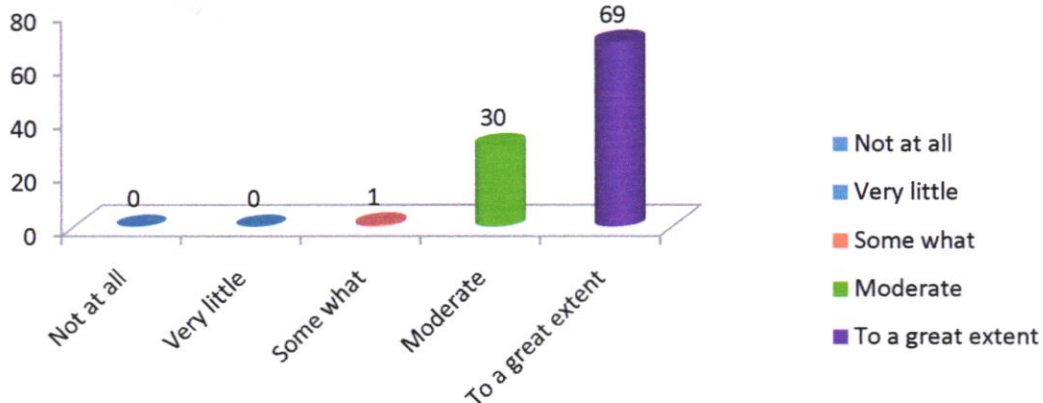


15. The institution makes effort to engage students in the monitoring, review and continuous quality improvement of the teaching learning process.

Strongly disagree Disagree Neutral Agree Strongly agree



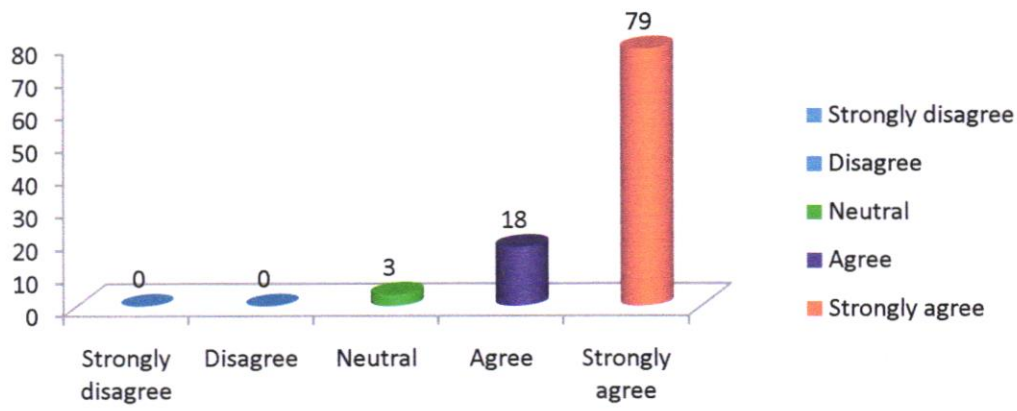
16. The institute/ teachers use student centric methods, such as experiential learning, participative learning and problem solving methodologies for enhancing learning experiences



H. S. Reddy
Principal
NARAYANA COLLEGE OF NURSING
Chinthareddypalem,
NELLORE - 524 003.



17. Teachers encourage you to participate in extracurricular activities.



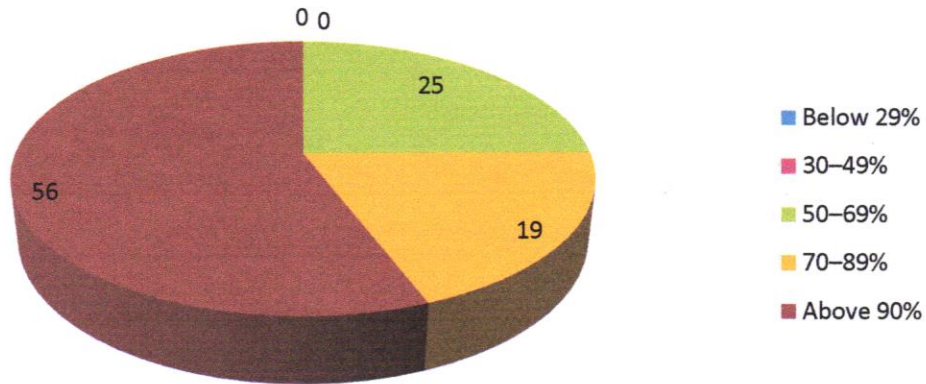
18. Efforts are made by the institute/ teachers to inculcate soft skills, life skills and employability skills to make you ready for the world of work.



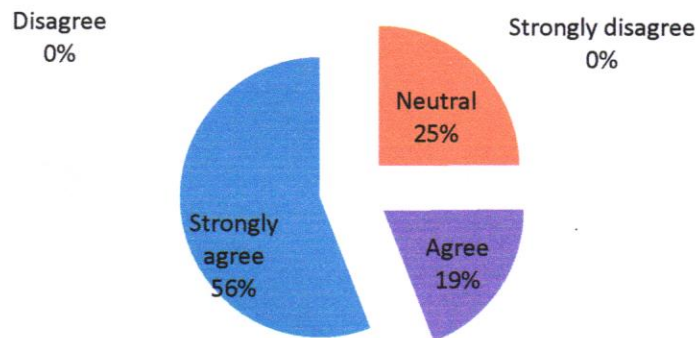
A. S. S. S.
Principal
NARAYANA COLLEGE OF NURSING
Chinthareddypalem,
NELLORE - 524 003.



19. What percentage of teachers use ICT tools such as LCD projector, Multimedia, etc. while teaching.



20 The overall quality of teaching-learning process in your institute is very good.



A. S. S. S.
Principal
NARAYANA COLLEGE OF NURSING
Chinthareddypalem,
NELLORE - 524 003.